

Downsaving EPS and AI files in Illustrator

Illustrator has the ability to save to earlier versions (Legacy formats) for both EPS and AI file formats.

MagiCut 6 will import up to Version 8/9.

MagiCut 2000,3,4,5 will import up to version 4. Please note bitmaps will prevent import in these versions of MagiCut.

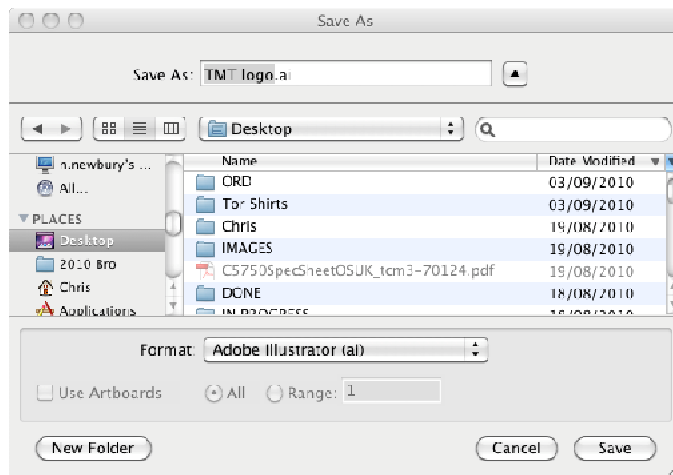
The following screen shots are from Illustrator 5 on the Mac platform. The PC version is very similar.

AI Saving from Illustrator

Start by selecting Save as and giving the design a name.

Select the folder / disk it is to be saved to

Choose format (Adobe Illustrator)

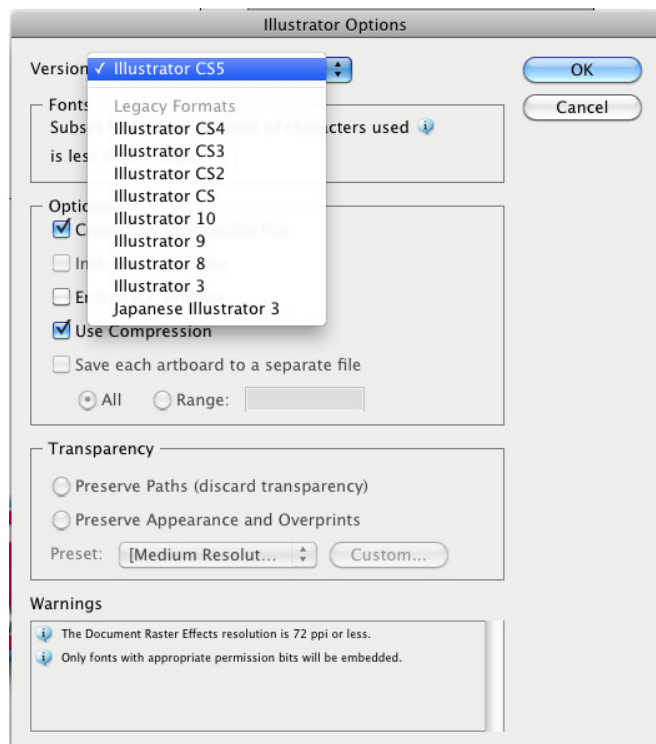


Click Save and a Second dialogue appears.

Here you can select the version of Illustrator, As this is 5, version CS4,CS3,CS2 etc are available.

Choose Version 8 or 9 for MagiCut 6. For pure cutting and for MagiCut 5 or less select Illustrator 3.

This will provide a suitable file for import into MagiCut



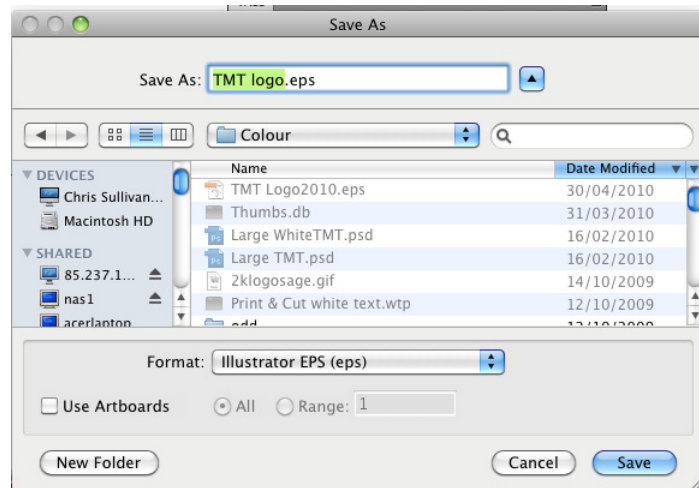
EPS Saving from Illustrator

The same options are available for EPS file saving. Note however Magicut 5 and less will not import any EPS with a bitmap in it.

Start the same as AI save, but select Illustrator EPS.

Enter a name and the destination

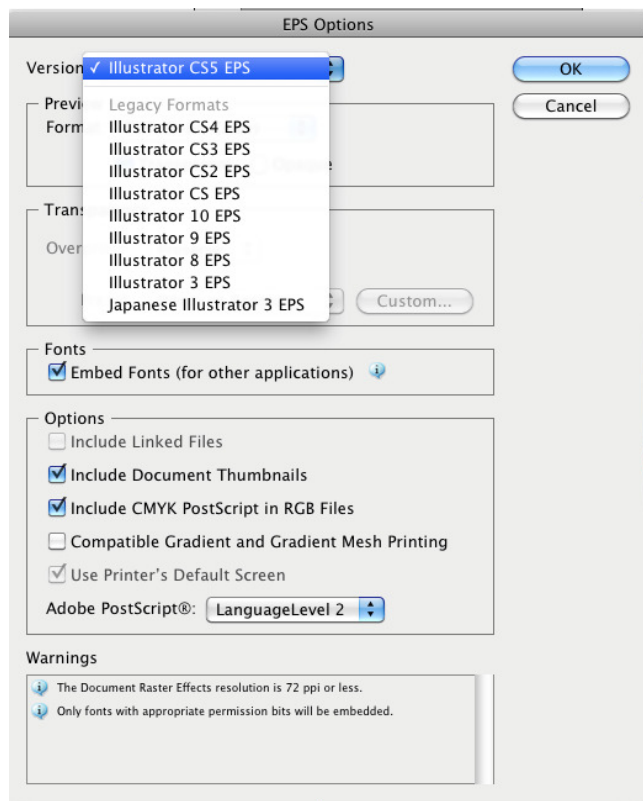
Press save



On the second dialogue various formats are available.

For MagiCut 6 use Illustrator 8 or 9.

For MagiCut5 or Less select Illustrator 3



For all Vector (AI and EPS) saves its safer to convert any fonts to Curves or paths before saving.

There are some variations in the available formats depending on the version of Illustrator.